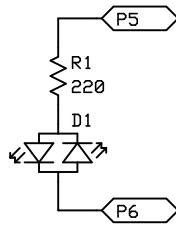
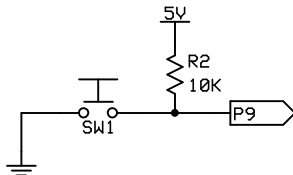


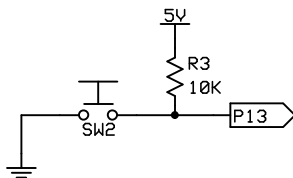
LED INDICATOR



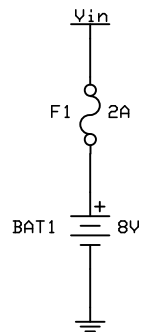
OPEN BUTTON  
(ACTIVE-LOW)



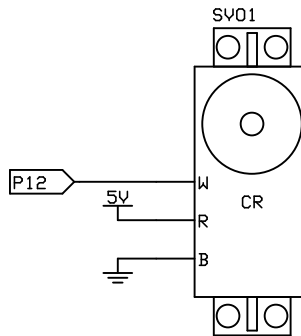
CLOSE BUTTON  
(ACTIVE-LOW)



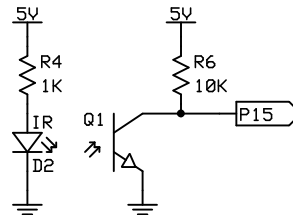
POWER SECTION  
(PART OF LI-ION POWER PACK #28989)



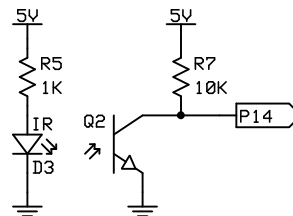
CONTINUOUS ROTATION SERVO



UPPER LIMIT SWITCH  
(ACTIVE-LOW)



LOWER LIMIT SWITCH  
(ACTIVE-LOW)



NOTES:

ALL CONNECTIONS ARE TO BOARD OF EDUCATION (#28850)  
BOE POWERED BY LI-ION PACK (#28989)  
SERVO VOLTAGE JUMPER IN EITHER POSITION

PARTS LIST:

- (1) BOARD OF EDUCATION FULL KIT USB (#28803)
- (1) LI-ION POWER PACK FULL KIT (#28989)
- (1) PARALLAX CONTINUOUS ROTATION SERVO (#900-00008)
- (1) BI-COLOR T1-3/4 LED (#350-00005)
- (2) INFRARED T1-3/4 LED (#350-00003)
- (2) 850NM T1-3/4 PHOTOTRANSISTOR (#350-00029)
- (1) 220 OHM 1/4 W 5% CARBON FILM RESISTOR (#150-02210)
- (2) 1K 1/4 W 5% CARBON FILM RESISTOR (#150-01020)
- (4) 10K 1/4 W 5% CARBON FILM RESISTOR (#150-01030)

Parallax Inc.

Door Control - Part 1

Part 1

Chris Savage  
01-30-2014

Page 1 of 1